

Charities and Trusts Committee

Friday, 26 October 2018

10.00 am

New Bremen Room, County Buildings, Martin Street, Stafford

NB. Members are requested to ensure that their Laptops/Tablets are fully charged before the meeting

John Tradewell
Director of Strategy, Governance and Change
18 October 2018

A G E N D A

1. **Apologies**
2. **Declaration of Interests**
3. **Minutes of the previous meeting held on 12 June 2018** (Pages 1 - 4)
4. **Trust land forming part of Brewood C of E (C) Middle School, School Road, Brewood, ST19 9DS** (Pages 5 - 40)
5. **Endowment Charity Funds Annual Accounts 2017/18** (Pages 41 - 62)
6. **Charities and Trusts Committee Property Holdings** (Pages 63 - 64)
7. **Exclusion of the Public and Press**

The Chairman to move:-

“That the public be excluded from the meeting for the following items of business which involve the likely disclosure of exempt information as defined in the paragraphs of Part 1 of Schedule 12A (as amended) of the Local Government Act 1972 indicated below”.

PART TWO **(reports in this section are exempt)**

8. **Exempt Minutes of the previous meeting held on 12 June 2018** (Pages 65 - 66)
(Exemption paragraph 3)

9. **Landau Forte Academy - TO FOLLOW**

(Exemption paragraph 3)

Membership	
Michael Greatorex	Kath Perry (Chairman)
Syed Hussain	David Smith (Vice-Chairman)
Ian Lawson	

Note for Members of the Press and Public

Filming of Meetings

The Open (public) section of this meeting may be filmed for live or later broadcasting or other use, and, if you are at the meeting, you may be filmed, and are deemed to have agreed to being filmed and to the use of the recording for broadcast and/or other purposes.

Recording by Press and Public

Recording (including by the use of social media) by the Press and Public is permitted from the public seating area provided it does not, in the opinion of the chairman, disrupt the meeting.

Minutes of the Charities and Trusts Committee Meeting held on 12 June 2018

Present: Kath Perry (Chairman)

Attendance	
Ian Lawson	David Smith (Vice-Chairman)

Apologies: Michael Greatorex and Dave Jones

PART ONE

24. Declaration of Interests

There were no declarations of interest on this occasion.

25. Minutes of the previous meeting held on 22 November 2017

RESOLVED – That the minutes of the meeting held on 22 November 2017 be confirmed and signed by the Chairman.

26. Stafford 14-19 Partnership - Business Plan and Update

The Committee were informed that the Stafford 14-19 Partnership was a collaboration of five high schools in Stafford offering a large curriculum in wider subjects which were not always available in other schools.

The Committee were requested to approve the Partnership's revised Business Plan and to consider for approval the funding request from the Staffordshire Education Centre Charity of the amount of £92,516 for 2018/19 and £150,000 for 2019/20.

The Committee were informed that the Partnership had requested an additional £7,516 for the year 2018/19 which would pay for the new GDPR arrangements and allow the Partnership to transfer onto a new server system. The Committee were also informed that the additional monies requested for the 2019/20 academic year would allow the partnership to work with vulnerable groups and offer vocational courses which would prevent an increase in the number of NEET students.

The Committee were also requested to consider giving approval in principle to the Stafford 14-19 Partnership being supported by Staffordshire Education Centre Charity with financial contributions for a further five years based on the production of a new Business Plan for 2020 to 2025, to be produced in May 2019. The Committee were mindful that this request was nearly the whole proportion of monies available to the Charity, and sought assurances that other organisations could access this money through the Partnership.

RESOLVED – (a) - That the Stafford 14-19 Partnership revised Business Plan 2016-2020 be approved.

(b) That the funding request from the Staffordshire Education Centre Charity for 2018/19 of the amount of £92,516 and 2019/20 for the amount of £150,000 be approved.

(c) That it be approved in principle that the Stafford 14-19 Partnership be supported by Staffordshire Education Centre Charity with financial contributions for a further five years based on the production of a new Business Plan for 2020 to 2025, to be produced in May 2019.

(d) That the County Council's County Commissioner for Skills and Employability be authorised to approve the release of funds set out in resolution (b) above subject to the successful delivery of the 2016-2020v3 Business Plan.

27. The Broom - Update

The Committee received an update in relation to the trust land adjacent to Dosthill Primary School known as the Broom. It was reported that the maintenance of the land was the only outstanding issue. The Committee were informed that the Borough Council were currently maintaining the land.

RESOLVED – That the update be noted.

28. Rugeley Endowment Registered Charity 258603

The Committee were presented with a report regarding the Rugeley Endowment Registered Charity which recommended that the Committee apply to the Charity Commission to alter the existing scheme to alter the definition of "Eligible School" to include an Academy to allow the Charity to support the new Academy in the Urban district of Rugeley.

A member spoke to the Committee as the local member expressing their concern with the proposal.

Following a vote it was:-

RESOLVED – (a) That an application be made to the Charity Commission to alter the existing scheme for the Rugeley Endowment to amend the definition of "Eligible School" to include an Academy to allow the Charity to support the new Academy in the Urban District of Rugeley.

(b) That it be noted the allocation of charitable income from the Charity is not permanent endowment and the income only can be applied in furthering the objects of the Charity and must not be used to relieve public funds.

(c) – That the Director of Strategy, Governance and Change be authorised to prepare, negotiate, seal and complete all necessary documentation to give effect to the above decision.

29. Property support to the Committee

Representatives from the Property team at Staffordshire County Council met with the Committee to discuss the property support the Committee requires.

It was reported that the Property team were prepared to assist the Committee with small scale issues, however, in the event that a larger issue arose, the Committee would be required to approve that individual Charities pay for the services that they received from the Property team.

The Committee requested a list of all of the properties and land that they were responsible for.

RESOLVED – (a) That the Committee continue to request the property team at Staffordshire County Council to assist them when required, and that it be noted that the Property Team will levy a charge on individual Charities for larger scale tasks.

(b) – That the Committee be given a list of all the properties and land for which they are responsible as Trustees.

30. Confirmation of the Action of the Director of Finance and Resources in relation to Education Endowments

The Committee were presented with a confirmation of the action of the Director of Finance and Resources in relation to Education Endowments.

RESOLVED – That the report be noted.

31. Exclusion of the Public and Press

RESOLVED – That the public be excluded from the meeting for the following items of business which involve the likely disclosure of exempt information as defined in the paragraphs of Part 1 of Schedule 12A (as amended) of the Local Government Act 1972 indicated below.

32. Exempt Minutes of the previous meeting held on 22 November 2017

(Exemption Paragraph 3)

33. Landau Forte Academy - Update

(Exemption Paragraph 3)

Chairman

Local Members' Interest	
Mark Sutton	South Staffordshire – Brewood

Charities and Trusts Committee

**Trust land forming part of Brewood C of E (C) Middle School, School Road,
Brewood, ST19 9DS
(formerly known as Brewood Grammar School)**

Proposal

1. Brewood C of E (C) Middle School (“the School”) is a voluntary controlled school which has been directed by the Secretary of State to convert to an Academy. The School is due to convert to an Academy on the 1st December 2018 and join the St Chads Academy Trust (“Academy Trust”).
2. As part of the conversion process Staffordshire County Council as corporate land owner and Local Education Authority (“County Council”) is required to grant a lease of the land and buildings used by the School to the Academy Trust and this report sets out the terms of the lease.
3. The School currently occupies land owned by the Staffordshire County Council, Brewood Middle School Charity and the Brewood Educational Charity.
4. Brewood Educational Charity (Charity Number 518038) (“the Charity”) owns the land shown coloured blue on the plan at Appendix 1 (“Charity Land”). The Charity Land is currently being registered at H M Land Registry.
5. The part of the Charity Land that is occupied by the School is shown coloured blue on the plan at Appendix 2 (“School Land”).
6. The remainder of the Charity Land is let in part on a Grazing Licence which is set out in Appendix 3 (“the Grazing Licence”) and the balance of the Charity Land is understood to be unoccupied.
7. Staffordshire County Council as the Charity Trustee (“Charity Trustee”) seek approval in their capacity as the Charity Trustee to grant a 125 year lease over the School Land which will be substantially based on the current Department for Education (DfE) template academy lease, save for amendments relevant to the individual circumstances affecting the School (“Academy Lease”), to the Academy Trust.
8. A summary of the standard terms of the DfE template lease are set out in Appendix 4.

9. The DfE Academy Order is attached to this report at Appendix 5, a copy of this order has been given to the Governing Body of Brewood C of E (C) Middle School headteacher and the County Council.
10. The current Charity scheme dated the 7th July 1986 is set out at Appendix 6 ("the Scheme"). Under the terms of this Scheme the Charity Land can be used as a farm for providing facilities for agricultural education and rural studies for primary and secondary school pupils in the County of Staffordshire with a preference for such pupils who are resident in the area of the Parishes of Brewood, Stretton, Featherstone and Shareshill.
11. In order to grant the Academy Lease over the School Land and obtain retrospective consent for the Grazing Licence, it will be necessary to amend the Scheme. Set out at Appendix 7 is the proposed application to the Charity Commission requesting the amendment to the Scheme ("the Scheme Amendment").

Report of the Director for Strategy, Governance and Change

The Staffordshire County Council's role as a Charity Trustee

1. Trustees have and must accept ultimate responsibility for directing the affairs of a charity, ensuring that it is solvent, well-run and delivers the charitable outcomes for the public benefit for which it has been set up.
2. Local Authorities are well suited to being a charity trustee as they are:-
 - rooted in the local community;
 - open and transparent in their dealings;
 - highly accountable for their actions, and
 - have the high standards of public conduct embedded in the way they work.
3. Charity trustees have a duty to act solely in the best interests of the charity and its beneficiaries with a view to furthering its charitable purposes and for no other purpose whatsoever. They must also ensure that any charitable assets are managed independently and prudently in accordance with their charitable purpose and any restrictions in the charity's governing document.
4. The Committee is probably aware that the Academies Act 2010 allows maintained schools to become Academies by applying to the Secretary of State for conversion to academy status. The Secretary of State is also able, as they have done in respect of the School, to issue a directive that a School converts to an Academy if the school is underperforming.

5. As part of the conversion process, governing bodies of academy schools are entitled to a 125 year full repairing insuring lease at a peppercorn rent forming part of the principal operational school site subject to rights to be reserved and lease back of any County Council facilities (if any).

Summary

6. The School is due to convert to an Academy on 1 December 2018. The County Council is required to grant to the Academy Trust a 125 year lease (of the land owned by the County Council in its corporate capacity) based on the template lease that the DfE has developed for this purpose.
7. Part of the School, shown coloured blue on the plan at Appendix 2 has been administered by the County Council as Charity Trustee under the Scheme. This part of the School does not therefore form part of the County Council's corporate estate but is held on trust.
8. An application to the Charity Commission is required to amend the Scheme so that the Charity Trustee are authorised to grant the Academy Lease in its capacity as Charity Trustee and remain as Charity Trustee under the Scheme.

Recommendations

9. The Committee is invited to recommend that the Committee:
 - (a) notes that the County Council is not the freeholder of the whole site of the School but is the Charity Trustee of the School Land;
 - (b) agrees that the Charity Trustee grant to the Academy Trust the Academy Lease of the School Land, to facilitate and complete the academy conversion process;
 - (c) agrees to the Charity Trustee, applying to the Charity Commission for the variation of the objects of the Scheme necessary to enable the Academy Lease of the School Land to be granted and to obtain retrospective consent for the Grazing Licence substantially in the form set out in Appendix 7; and
 - (d) delegates authority to agree the terms of the Academy Lease, the variation to the objects of the Scheme, and to take such other actions as may be necessary to implement the decision in (b) and (c) above, to the Director Strategy, Governance and Change.

Background

10. It is understood that historically all of the land coloured blue on the plan at Appendix 1 was used by the Brewood Grammar School in compliance with the objects of the Charity.

11. In approximately 1977 Brewood Grammer School became a mixed-sex middle school now known as the Brewood C of E (C) Middle School. The School now only occupies part of the land owned by the Charity.
12. The School Land has therefore been used for general educational purposes rather than specifically as a farm for providing facilities for agricultural education and rural studies since approximately 1977.
13. The School is in the process of converting into an Academy and it is therefore requested that the Charity grant a standard 125 year Academy Lease to St Chad's Academies Trust of the School Land.
14. The remaining Charity Land became surplus to the schools requirements. Part is currently vacant and part is being let under the Grazing Licence.
15. The objectives in the Scheme can therefore no longer be carried out in the way laid down in the governing document.
16. Local Authorities are not involved in the decision as to whether a School becomes an Academy this is a matter for the Secretary of State for Education.
17. There are two options for dealing with the School Land owned by the Charity Trustee at the School:
 - 1) The County Council remains Charity Trustee and grants the lease to the Academy Trust in that capacity, or
 - 2) The Academy Trust is appointed as the charity trustee.
18. The preference of the Charity Trustee is to proceed in accordance with option 1) above subject to a variation of the Scheme to permit the Academy Lease to be entered into.
19. In option 2) the Academy Trust would be appointed as charity trustee. In this scenario, the Scheme would also need to be varied as described above and the Academy Trust would need to apply to the Charity Commission to be appointed as a charity trustee. Once the Charity Commission is satisfied that the Academy Trust could be appointed as charity trustee, the trusteeship would transfer from the Charity Trustee to the Academy Trust. A substantial amount of corroborative information is required by the Charity Commission to satisfy it that the appointment of the Academy Trust is appropriate.
 - (a) This would include:
 - i) evidence that the inherent conflicts of interest will be managed appropriately. The freehold of the land will remain with the as Charity Trustee and if the Academy Trust also becomes the

trustee of the Scheme, it would be occupying land that it leases to itself creating a conflict of interest;

- ii) confirmation that, if the Academy Trust is appointed under the Scheme it will have a suitable procedure in place to appoint replacement trustees in the event that the Academy Trust becomes insolvent or otherwise wound up;
- iii) the Charity Trustee would also have to be satisfied that the Academy Trust will not merge the freehold interest that it will effectively have as trustee with the leasehold interest that it will have as tenant;
- iv) the Charity Commission would also need to see evidence that the Charity Trustee has considered alternatives to the appointment of the Academy Trust as trustee under the Scheme and why those alternatives are not in the interests of the Charity Trustee.

To satisfy all of these demands would place an onerous and unnecessary burden on the Charity Trustee, the County Council and the Academy Trust it is not considered to be a realistic solution.

Equalities Implications

- 20. The statutory functions discharged by the Charity Trustee are subject to a separate and distinct statutory regime underpinned (principally) by the Charities Act 2011, Trustee Act 2000 and relevant Charity Commission guidance. These are non-executive functions and are therefore not subject to the Equalities Act 2010 provisions. However, no decision is made until the Charity Trustee has determined it is expedient in the interests of the charity to grant a lease to the Academy Trust.

Legal Implications

- 21. Management and governance arrangements for charitable trusts are set out in the constitution under which they were established. Charity trustees in making decisions must also comply with Charities Act 2011, Trustee Act 2000, other relevant legislation and guidance issued by the Charity Commission. The assets of a charity must be used in accordance with charitable law, and the Scheme failing which this will give rise to a breach of trust. Trustees have a duty to preserve the assets of trust. Decisions made by the charity must be expedient in the interests of the charity at all times. The disposal of trust assets is an exceptional event and must be in line with appropriate professional advice. All valuation advice conforms to the requirements in Part 7 Charities Act 2011 for the disposition of trust land. The grant of a long lease is a disposal for these purposes.

Resource and value for Money Implications

22. There are few financial implications for the Charity Trustee other than exposure to the legal fees associated with the grant of the lease to the Academy Trust. These legal costs will be paid by the County Council as part of the overall academy conversion process for the School. The Charity are only covering the costs of the first registration of the Charity Land and the application to the Charity Commission to amend the Scheme which is required not only for the Academy Lease but also retrospectively for the Grazing Licence.

Risk Implications

23. There is little risk to the Charity Trustee associated with the grant of the Academy Lease. It will continue in its role as sole Charity Trustee but its administrative duties will be reduced as the site will be administered by the Academy Trust in accordance with the Academy Lease and the objects of the Scheme (as amended).
24. There is more risk to the Academy Trust if the lease is not completed as the School will continue to occupy the part of the site without a Lease.

Conclusions

25. The Guidance Notes to the Academies Act 2010 recommend that all land and buildings used by a school prior to its conversion to academy status be transferred by way of a 125 year lease. The grant of the lease by the County Council and the Charity Trustee is the most appropriate means of formalising occupation. As the Charity Trustee's interest in the School Site is as a Charity Trustee there is no authority delegated to officers to approve the grant of the Academy Lease and thus specific approval is required to delegate that decision to officers in this instance and amendments to the Scheme are required as referred to above.
26. Children and Education Services supports this report and the recommendations made.

Decision of the Charities and Trust Committee

27. That the Committee approves:
 - (i) the grant of an Academy Lease of the School Land shown on the plan at Appendix 2 on the principal terms set out in Appendix 4;
 - (ii) authorises if required, the entering into and completion of an agreement between the Charity Trustee and the Academy Trust to document and provide for access and sharing and any other arrangements existing

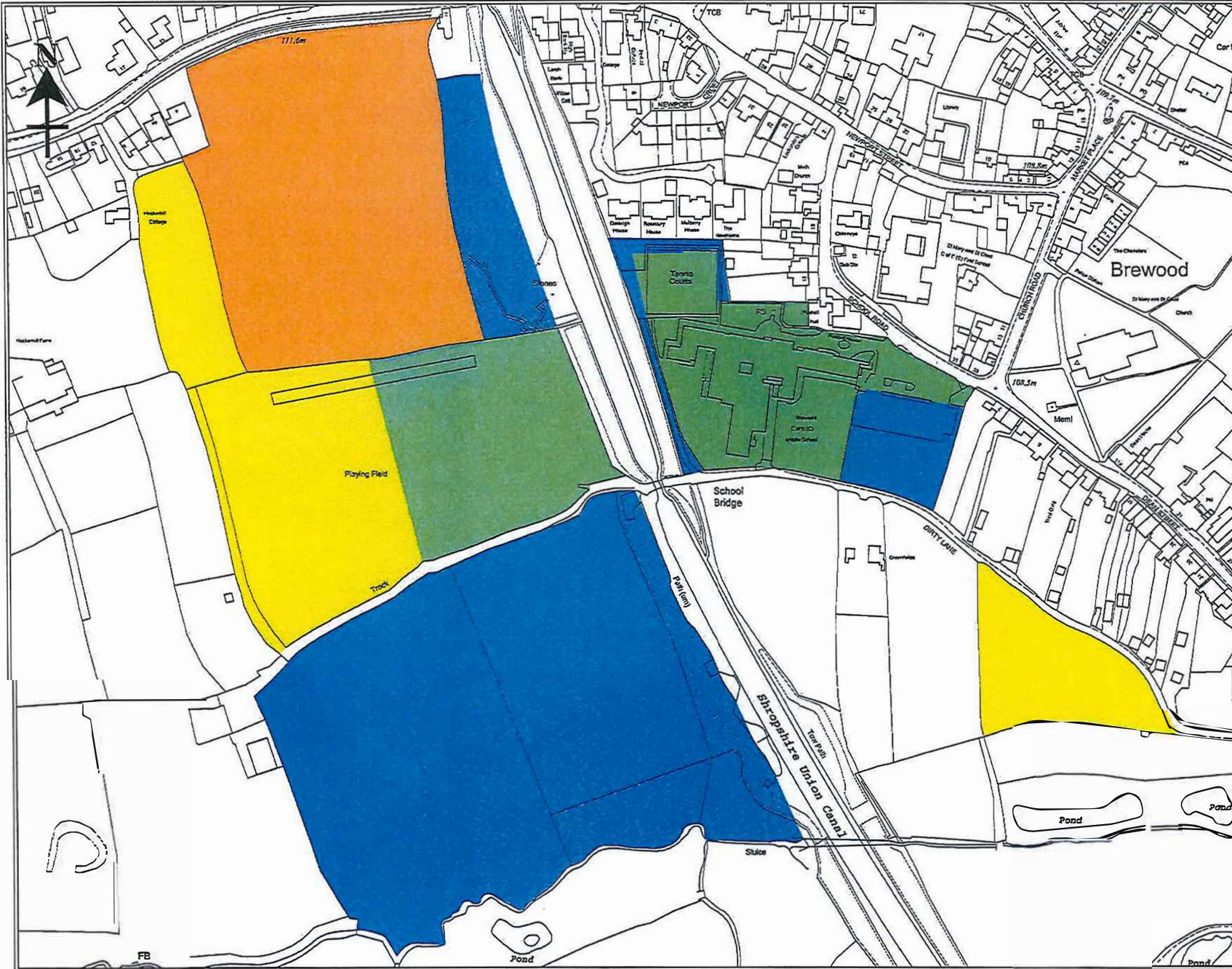
between the parties that may otherwise be provided within the Academy Lease;

- (iii) authorises the application to the Charity Commission at Appendix 7 in respect of the amendments required to the Scheme; and
- (iv) authorises the Director for Strategy, Governance and Change to prepare, negotiate, execute, seal and complete all necessary legal documentation to give effect to the above decisions.

Report Author:

Legal Services Unit, Staffordshire County Council

Appendix 1 – Plan showing land owned by Charity Trustee



 Staffordshire
County Council

Crown copyright and database
rights 2011 Ordnance Survey
* Licence Numbers: 100019472

Plot Centre (BNG):
Easting: 388077
Northing: 308589

Scale: 1:2000

Date: 22-JUN-2011

Plan Ref: LW

Title:
Brewood Middle School
Title Plots

Appendix 2 – Plan showing the Charity Land occupied by the School

Appendix 3 – Grazing Licence currently in place over part of the Charity Land

Reference:

GRAZING LICENCE

Conditions

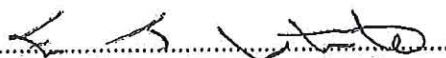
- (1) The Staffordshire County Council hereby licences and authorises the licensee to enter upon and use for grazing and mowing purposes only and not otherwise at those fields situated at Dirty Lane, Brewood shown on plan attached from 1 April 2017 to 25 April 2018. Total of 4.10 hectares (10.12 acres) or thereabouts.
- (2) The licensee shall use the said fields for the purpose of grazing sheep, belonging to himself and no other person and the taking of one mowing crop.
- (3) The licensee must use all reasonable effort to stop stock from straying from the land.
- (4) The licensee shall be responsible for maintaining the existing fences and, where necessary, the erection of temporary fences to ensure the retention of the livestock on the land.
- (5) The licensee is responsible for trimming at least once every year any docks, thistles or nettles and to pull and remove any ragwort from the land.
- (6) The licensee shall not keep a bull or any vicious or unruly animal upon the land.
- (7) The licensee shall not store any produce (being silage, hay or straw) on the land without written permission from the licensor.
- (8) The licensee shall not erect any building on the land or plough or otherwise disturb the land, and maintain the land in Good Agricultural and Environmental Condition.
- (9) To indemnify the licensor against any deductions from his Basic Payment arising from any action or omission by the licensee including any breach of the statutory management requirements and cross compliance rules of the Basic Payment Scheme.
- (10) The licensee shall not plough or re-seed the land without prior consent being granted from the licensor.
- (11) The licensee shall not do or permit or suffer anything in or upon the said land which may be or become a nuisance or annoyance or cause of damage to the Council or to the owners or occupiers of other property in the neighbourhood.
- (12) The licensee shall be liable for any damage and shall indemnify Staffordshire County Council against any third party claims arising by virtue of his use of the land.

- (13) Upon the termination of this agreement, the licensee shall remove all animals from the said fields and deliver up his possession of the said fields to the Council.
- (14) The licensee shall be responsible for payment of any water charges to the appropriate Water Undertaking and will also be responsible for maintaining the water trough(s) in a good state of repair.

- (15) The licensee shall pay to the Council the sum £810 per annum. On the signing of this agreement the licensee shall pay £810.

- (16) The licensee shall be liable to pay interest on any licensee areas or other monies due at 4.5% (Bank plc Base Rate for the time plus 4%) from the day when the monies are due to when the instalment is made.
- (17) The Council reserve the right to terminate this licence if the land is required for other purposes by giving one month's written notice and in this case, a proportionate amount of the sum paid shall be refunded.
- (18) It is expressly agreed and understood by both parties to this agreement that the Council does not undertake to renew this grazing licence for a further period.
- (19) If the licensee shall neglect to observe any agreement on his part hereinbefore contained, the Council may, at any time thereafter, terminate this licence upon giving written notice to the licensee.
- (20) It is the responsibility of the licensee to take out and maintain appropriate public liability insurance for the business and any damage arising from the animals brought onto the land.
- (21) The licensee must not obstruct any public or private right of way over the land shown on the attached plan.
- (22) The licensee must notify the licensor if he becomes aware of any trespass on the land
- (23) The licensee must not damage any items of fixed equipment belonging to the licensor or damage the surface of the land.
- (24) The licensee must comply with the requirements of the Health and Safety at Work Act 1974 (as amended).

I AGREE TO ABIDE BY THE CONDITIONS.

Signed:  Date: 20-8-11

Name: Mr Edwin John White

Address: Hyde Farm
Brewood
Staffordshire
ST19 9DJ

Telephone Number: Home: 01902 850 245

Staffordshire County Council

Based upon Ordnance Survey material
 Crown copyright and database right
 2008. All rights reserved.
 Ordnance Survey
 Licence Number 100019422

Headwall HW Outfall *O.F.*
 Inspection Chamber *I.C.*
 Silt Trap *S.T.*

Electricity Cable ---
 Gas Pipe - - -
 Oil Pipe - - -
 Water Pipe - - -
 Ditch - - -
 Tenancy Boundary []

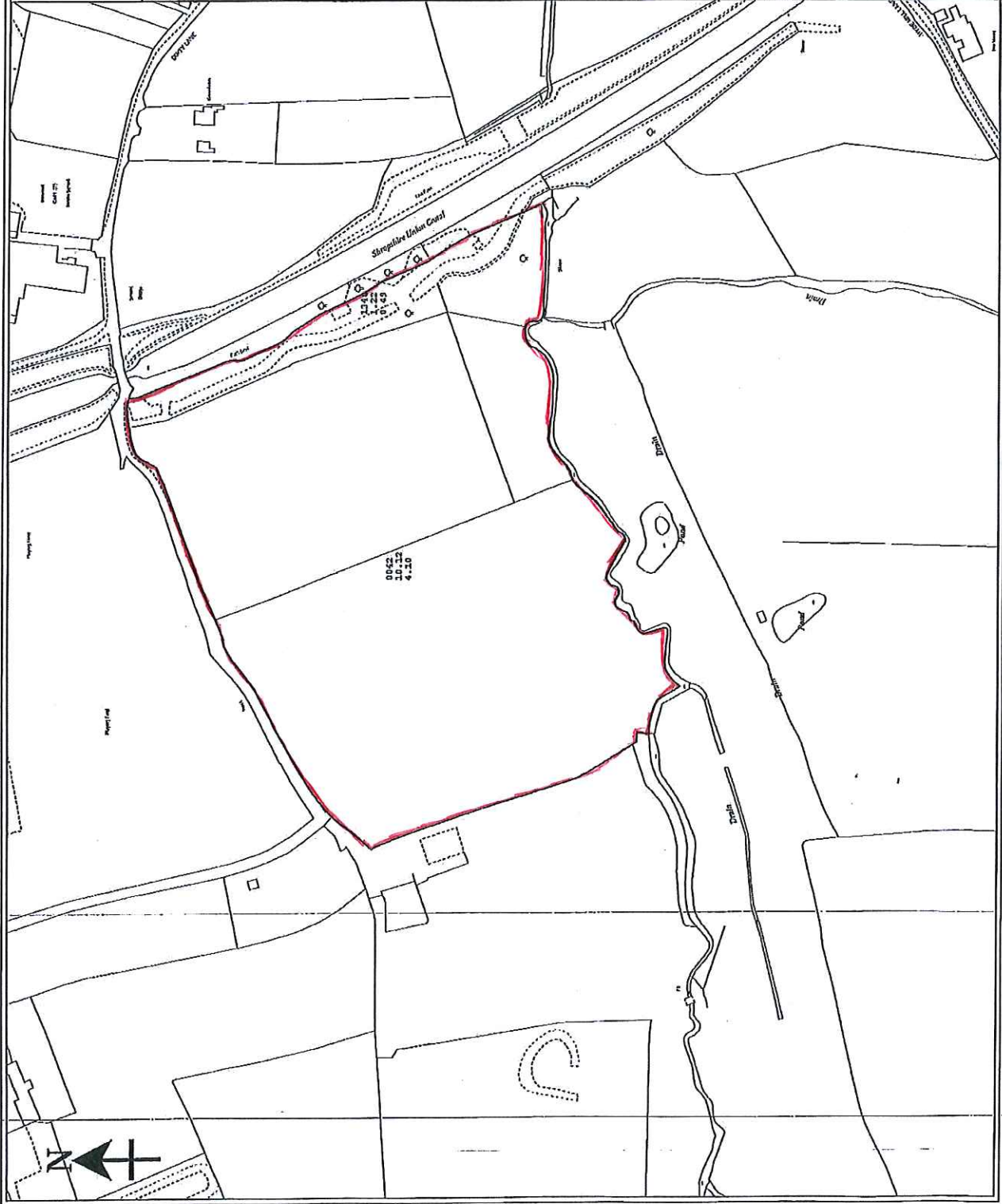
Plot Centre (BNG):
 Easting: 387989
 Northing: 308405

Scale 1:2500

Date: 28-JAN-2009

Plan Ref: LW

Title:
 Land at Brewwood
 Dirty Lane



Appendix 4 - The Principal Terms of the Academy Lease as prescribed by the Department for Education

Premises: School Land

Landlord: Staffordshire County Council as Charity Trustee, 2 Staffordshire Place, Tipping Street, Stafford, ST16 2DH

Tenant: (Academy Trust) ST CHAD'S ACADEMIES TRUST (Company No 08526973) whose registered office is at St Mary's House, The Close, Lichfield, Staffordshire WS13 7LD

Rent: The annual rent is to be a peppercorn for the duration of the term.

Term: 125 years the lease to be contracted outside the security of tenure provisions of the Landlord & Tenant Act 1954 (which avoids the tenant obtaining a secure business tenancy).

Outgoings: The Tenant will be responsible for the payment of all outgoings which are now or may during the term be payable in respect of the Premises.

Alienation: There is no ability for the Tenant to assign or transfer the Premises demised without consent from the Secretary of State. The Tenant is permitted to assign or transfer the whole of the Premises to a proprietor or proposed proprietor of an academy to a successor charitable or public body without the consent of the Landlord where the Secretary of State has given approval in writing to such an assignment.

The Tenant will not underlet the whole of the Premises and not underlet any part or parts of the Premises without the Landlord's consent for a term (including any option to renew) in excess of 3 years. Any such underletting is to be outside the Landlord and Tenant Act 1954.

The Tenant will no later than 30 days after an assignment the Tenant shall give the Landlord notice of the assignment and/or a copy of the Secretary of State's written approval to such assignment.

There is no liability to place a financial charge on the whole or any part or parts of the Premises.

Repair: The Tenant will keep the Premises in a good and substantial repair, clean and tidy condition and to repair any damage caused to the Premises and make good any deterioration to the condition of the Premises that may arise from the term commencement date.

Signs and Advertisements: The Tenant to notify the Landlord of the affixing or display on the boundaries of the Premises other than signs which are required by

law to be displayed, do not require planning permission or are necessary or usual for the authorised use of the Premises.

Use: The permitted use will be for the purposes of the Academy Trust (as set out in any charitable objects, memorandum and articles of association of the Tenant from time to time) and “for the purposes of the provision of educational services by the Tenant and for community, fundraising and recreational purposes which are ancillary to the provision of educational services”.

Insurance: The Tenant will:

- keep the Premises insured with a reputable insurance office against loss or damage by the insured risks in the sum the Tenant is advised represents the reinstatement value of the Premises from time to time;
- pay the premiums for insurance promptly as they become due and maintain in force the policies of insurance on the Premises;
- following damages or destruction and subject to obtaining all necessary consents and as soon as may be reasonably practicable, unless it will be impossible or impractical, reinstate the Premises and lay out all monies in reinstating and rebuilding the Premises.

Alterations: The Tenant will not make any external or structural alterations or additions to any structures for the time being on the Premises without the Landlord’s prior written consent, submitting to the Landlord adequate plans and specifications describing the proposed alteration, addition or variation, consulting generally with the Landlord on the proposed alterations and dealing with any queries that the Landlord acting reasonably may raise. The Tenant will pay the Landlord’s reasonable costs in respect of any future service of notices, applications for licences and permissions in respect of the lease.

Statutory Obligations: Statutory obligations, health and safety and CDM regulations in this clause “2015 regulations” means the construction (design and management) regulations 2015 and “client” “health and safety plan” “health and safety file” “planning supervisor” and “principal contractor” have the same meanings as the regulations, and to comply with all laws affecting the Premises, the physical condition or the user of them or the use of any fixtures and fittings in them.

Timescale: The Tenant will complete the lease on receipt and agreement of the legal documentation by their Solicitors.

Legal Costs: Each party will bear their own legal costs involved with granting the lease. There are no financial implications relating to the grant of the lease for the Charity Trustee, all costs relating to officer time in preparation of the lease will be met by the Academy Trust or the County Council.

Conditions: The lease to include such other terms or variations of the principal terms as may be deemed appropriate by the Charity Trustees as agreed by the Academy Trust.

Appendix 5 – Department for Education Order (Directive)



Department
for Education

Christine Quinn
Office of the Regional Schools Commissioner
for the West Midlands
Department for Education
53-55 Butts Road
Earlsdon Park
Coventry
CV1 3BH

Chair of Governors
Brewood CofE (C) Middle School
School Road
Brewood
Stafford
Staffordshire
ST19 9DS

24 February 2017

ACADEMY ORDER FOR BREWOOD CofE (C) MIDDLE SCHOOL

I am writing to you as the Regional Schools Commissioner responsible for tackling school underperformance in this region.

Your school was inspected by Ofsted on 13 December 2016 and is judged to be inadequate.

As the school is eligible for intervention under sections 61 and 62 of the 2006 Education and Inspections Act, I am writing on behalf of the Secretary of State for Education under Section 4 of the Academies Act 2010 (as amended by the Education and Adoption Act 2016) to issue the enclosed Academy Order.

I am in discussion with the diocese and other relevant people under Section 5A of the Academies Act 2010 (as amended by the Education and Adoption Act 2016) on the identity of the academy sponsorship arrangements for your school. I will be in contact again in due course to confirm the proposed sponsor and seek representations.

The DfE Project Lead (PL) assigned to you is Colin Gogay and can be contacted by email: Colin.Gogay@education.gov.uk. The PL will contact you and the local authority within five working days of this letter and will provide advice about what steps you will be expected to take, and to what timescales, to facilitate the conversion. Further information can be found in the Schools Causing Concern guidance at:

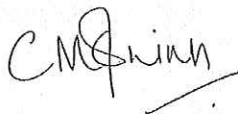
www.gov.uk/government/uploads/system/uploads/attachment_data/file/510080/schools-causing-concern-guidance.pdf

To minimise any delays to the academy conversion process, the governing body of your school and the local authority are under a duty to take all reasonable steps to facilitate the conversion of the school into an academy. Further details are set out in Annex A. The governing body and the local authority are also under a duty to take all reasonable steps to facilitate the making of academy arrangements with a sponsor, once determined (section 5B of the Academies Act 2010, as amended by the Education and Adoption Act 2016).

The Secretary of State has the power to revoke this Academy Order. This would usually only happen in exceptional circumstances, predominantly where following due diligence a school is judged to be financially unviable. Where this is the case, the expectation is that the local authority, in consultation with the diocese, will take steps to cease to maintain the school.

Please complete the attached Annex B as soon as possible; your PL will advise you of a deadline for return.

I am copying this letter and Academy Order to the head teacher of your school, Staffordshire County Council and to the Diocese.

A handwritten signature in black ink, appearing to read 'C. Quinn', with a horizontal line underneath the name.

Christine Quinn,

Regional Schools Commissioner, West Midlands

Annex A: duty to facilitate conversion

- The governing body and the local authority are under a duty to take all reasonable steps to facilitate the conversion of the school into an academy by a date to be determined by the Regional Schools Commissioner.
- The governing body and the local authority are also under a duty to facilitate the making of academy arrangements with the sponsor.
- The Secretary of State would expect the governing body and local authority (LA), as appropriate, to undertake the following to facilitate conversion:
- Provide reasonable and timely access for the academy trust or sponsor and its agents to information necessary for the conversion and for access to the school premises in furtherance of the conversion;
- Co-operate in providing data and information including information on pupil performance and tracking systems;
- Drafting of, and agreement on, a Commercial Transfer Agreement which outlines historic and future liabilities, staff and asset information and contracts and agreements;
- Arrange for the transfer of any existing contracts the academy trust will continue with post-opening;
- Provision of financial information including budget statements, internal school budget information and audit reports;
- Provision of land information, including a site plan, details of any shared use and land registration documentation to the academy trust;
- Agree land and building arrangements with the academy trust or other landowner where appropriate; conclude shared use agreements where appropriate;
- Completion of the land transfer to the academy trust using the DfE model lease;
- The LA, or governing body, if it is the employer of the current staff, should complete the TUPE process including informal and formal consultation with staff and union representatives in a timely manner so as not to delay the agreed transfer date;
- Provision of staff information to the academy trust in good time to allow for due diligence to be conducted;
- Provide information to the academy trust on pension arrangements for teaching and non-teaching staff.
- For PFI schools, the LA and the governing body should provide necessary financial information and complete the required documentation including the principal agreement and the project agreement.
- If the LA is required to and has not completed the transfer of its interest in the land to a church school, this should be completed speedily.

This is not an exhaustive list the governing body and the local authority are under a general duty to facilitate conversion and the making of academy arrangements which may well include other tasks not listed here. The Project Lead will draw up a timetable for this academy conversion. Officials will report regularly to the relevant RSC on progress and if necessary raise any concerns about where it is not felt that the LA or governing body is taking reasonable steps to facilitate the conversion in line with its legal obligations. The Secretary of State has powers to direct the LA and the governing body to take specified steps to facilitate the conversion.

Annex B: information collection

To be completed by the School Governing Body

Your details

Name:

Email address:

Telephone number:

Are you the main contact for the conversion process?

School information

School Pupil Forecasts			
	Capacity	Total pupil numbers 4-11; 11-16; 16-18	% full
Current AY (2015/16)			
2016/17 Forecast			
2017/18 Forecast			
2018/19 Forecast			

School Budget Information	
Revenue carry forward at end-March 2016	
Projected revenue balance at end-March 2017:	£
If <u>revenue</u> deficit, give reasons	
Capital carry forward at end-March 2016	
Projected capital balance at end-March 2017:	£
If <u>capital</u> deficit, give reasons and remedial action:	
Details of any agreed loans or leases (please provide details of who the loan/lease is with, how much for and what period also include your schedule of repayments and the interest rate being charged)	

2016-19 finance plans:			
Revenue balances:	2016/17 budget	2017/18 budget	2018/19 budget
Total allocation and income			
Revenue gross expenditure			
Revenue balance in year			
Revenue balance brought forward from previous year			
Revenue balance carried forward to following year			
Notes:			

Additional information

Is your school part of a local authority reorganisation?

Is your school part of any closure plans your local authority may have? If so, please provide details, including timetable for closure.

Is your school a church school or linked to a diocese? If so, which?

Is your school supported by a foundation, trust or other body that appoints foundation governors? If so, please provide details (including trust contact details)

Is your school part of a federation (The School Governance (Federations) (England) Regulations 2012)?

Land and buildings

Who owns or holds your school's building and associated land?

Do other organisations use any part of your school's facilities? For example, this could include hiring out your school hall or playing fields to community groups.

Are there any planned or ongoing building works at your school? (If so, please provide details below of what is being done, their scheduled completion date and whether the arrangements for their funding will be affected by academy conversion.

Is there a shared facility on site, such as a nursery, children's centre, swimming pool, leisure centre or community library? (If yes, please provide details)

Does your school receive any grants from Sport England, The Big Lottery Fund, or the Football Federation? If so, how much per annum?

Is your school part of a private finance initiative (PFI) scheme? If so, which scheme?

Is your school part of the Priority School Building Programme?

Is the school part of a Building Schools for the Future (BSF) contract?



Rt Hon Justine Greening MP
Secretary of State

Sanctuary Buildings Great Smith Street Westminster London SW1P 3BT
tel: 0370 000 2288 www.education.gov.uk/help/contactus

To: The Chair of Governors of Brewood CofE (C) Middle School

Staffordshire County Council

ACADEMY ORDER

1. This is an Academy Order made further to section 4(A1) of the Academies Act 2010.
2. I hereby order that on the conversion date Brewood CofE (C) Middle School shall be converted into an Academy.
3. The conversion date shall be the date that the school opens as an Academy further to and as provided for in Academy arrangements made further to section 1 of the Academies Act 2010.
4. On the conversion date Staffordshire County Council shall cease to maintain Brewood CofE (C) Middle School.
5. The independent school standards (as defined in section 157(2) of the Education Act 2002) are to be treated as met in relation to the Academy on the conversion date.

Signed on behalf of the Secretary of State for Education by:

Signed:

Date: 24 February 2017

Christine Quinn,
Regional Schools Commissioner

Appendix 6 – Charity Scheme dated July 1986

Sealed 7th July 1986

N153(S)
86

County - Staffordshire
Place - Brewood
Charities - 1. Brewood Grammar School
Foundation
2. Kempson Exhibition
Fund
3. Parke Exhibition
Foundation

L4
631,270 Pt. I

Scheme

CHARITY COMMISSION

In the matter of the following Charities, at Brewood, in the County of Staffordshire:-

1. The Brewood Grammar School Foundation;
2. The Kempson Exhibition Fund;
3. The Parke Exhibition Foundation;

which Charities are regulated by a Scheme made by the Secretary of State for Education and Science on the 25th November 1958; and

In the matter of the Charities Act 1960.

THE CHARITY COMMISSIONERS FOR ENGLAND AND WALES HEREBY ORDER that the following Scheme be approved and established:-

S C H E M E

1. Administration of Charities. The above-mentioned Charities and the property thereof specified in the schedule hereto and all other the property (if any) of the Charities shall be administered and managed so as to give effect to the provisions of this Scheme.

2. Separate Charities. (1) The following property belonging to the Charity numbered 1 above shall be administered and managed as a separate Charity under the title of the Brewood Middle School Charity, namely, +

The land numbered 1 in the said schedule;
One third in value as nearly as may be of the investments and cash belonging to the said Charity numbered 1.

(2) The remaining property belonging to the said Charity numbered 1 shall be administered and managed as a separate Charity under the title of the Brewood Educational Charity. ✓

3. Further Scheme. Power is hereby reserved to the Charity Commissioners to establish upon the application upon which the Order establishing this Scheme is made a further Scheme for the regulation of the Brewood Middle School Charity.

N1020-26-7-78-MC

4. Investments and cash. Subject to any further direction of the Commissioners -

- (1) All investments now or at any time belonging to the Charity not already standing in the name of the Official Custodian for Charities shall be transferred to the said Official Custodian;
- (2) All sums of cash now or at any time belonging to the Charity, other than sums of cash needed for immediate working purposes, shall be invested in the name of the said Official Custodian.

5. Trustee. The Staffordshire County Council shall be the Trustee of the Brewood Educational Charity and the Charities numbered 2 and 3 above, which are hereinafter referred to together as the Charities.

USE AND MANAGEMENT OF LANDS

6. Use of lands. (1) The Trustee shall use the lands numbered 2 and 3 in the said schedule as a farm for providing facilities for agricultural education and rural studies for primary and secondary school pupils in the County of Staffordshire, with a preference for such pupils who are resident in the area of the Parishes of Brewood, Stretton, Featherstone and Shareshill.

(2) The Trustee shall use the lands numbered 4 and 5 in the said schedule with the buildings thereon as housing accommodation for teaching and other staff employed at the said farm or at any secondary school or secondary schools serving the said area: Provided that if any of such lands and buildings are no longer required for such purpose they may be sold, subject to the authority of any further Order or Orders of the Commissioners, and the clear proceeds of any such sale shall be invested in the name of the said Official Custodian, as to one third thereof as nearly as may be, in trust for the Brewood Middle School Charity, and as to two thirds thereof as nearly as may be in trust for the Brewood Educational Charity.

EXPENSES OF MANAGEMENT

7. Expenses of management. The Trustee shall first defray out of the income of the Brewood Educational Charity the cost of improvements, repairs and insurance and all other charges and outgoings payable in respect of the property of that Charity and all the proper costs, charges and expenses of and incidental to the administration and management of the Charities out of the income thereof, and as between the Charities so far as may be rateably.

BREWOD EDUCATIONAL CHARITY

8. Application of income. (1) Subject to payment of the expenses aforesaid, the Trustee shall apply the yearly income of the Brewood Educational Charity in manner following.

(2) The Trustee may apply not more than one third of such income or such other proportion as the Commissioners approve from time to time in providing such special benefits of any kind not normally provided by the local education authority for any secondary school (excepting the Brewood Middle School) serving the area of the Parishes of Brewood, Stretton, Featherstone and Shareshill as may from time to time be agreed between the School Governors and the Trustees.

(3) The Trustee shall apply the residue of such income in promoting the education of persons under the age of 25 years who are in need of financial assistance and who have for not less than two years at any time either attended any secondary middle school (excepting the Brewood Middle School) which serves or has served the said area, or attended before the 31st December 1982 any other secondary school which serves or has served the said area, in one or more of the following ways:-

- (a) In awarding to such persons exhibitions, tenable at any college of education, university, or other institution of further (including professional and technical) education, approved by the Trustee;
- (b) In providing financial assistance, outfits, clothing, tools, instruments or books to enable such persons on leaving school, university or any other educational establishment, to prepare for, or to assist their entry into, a profession, trade or calling;
- (c) In awarding bursaries or maintenance allowances to enable such persons to travel, whether in this country or abroad, to pursue their education;
- (d) In providing financial assistance to enable such persons to study music or other arts; and
- (e) In otherwise promoting the education, including social and physical training, of such persons:

Provided that within the limits prescribed by this Scheme, the Trustee shall have full power to make rules for the award of exhibitions, bursaries or maintenance allowances or other benefits, including rules as to the value and period of tenure of the awards, and the qualifications, and method of ascertainment and selection, of beneficiaries.

KEMPSON EXHIBITION FUND

9. Application of income. (1) Subject to payment of the expenses aforesaid, the Trustee shall apply the income of the said Charity numbered 2 in awarding an exhibition for a term of not more than three years tenable at any college of education, university, or other institution of further (including professional and technical) education, approved by the Trustee, to young men under the age of 25 years who are in need of financial assistance and who have for not less than two years at any time either attended any secondary middle school which serves or has served the said area, or attended before the 31st December 1982 any other secondary school which serves or has served the said area: Provided that in the making of awards under this clause special account shall be taken of the knowledge of candidates of scripture and theology, and a preference shall be given firstly, to candidates of the kindred of the Reverend Henry Kempson, the founder, and secondly, to the sons of clergymen of the Church of England.

(2) If at any time the Trustee is unable to find a suitable candidate for the exhibition, the Dean of Christ Church, in the University of Oxford, shall be empowered to award it to a deserving undergraduate member or members of that college, with a preference for any who have at any time either

attended any secondary middle school which serves or has served the said area, or attended before the 31st December 1982 any other secondary school which serves or has served the said area, subject to the conditions specified in the proviso to the last preceding sub-clause hereof.

PARKE EXHIBITION FOUNDATION

10. Application of income. Subject to payment of the expenses aforesaid, the Trustee shall apply the income of the said Charity numbered 3 in awarding exhibitions for terms of not more than three years tenable at any college of education, university, or other institution of further (including professional and technical) education approved by the Trustee, to young men under the age of 25 years who are members of the Church of England, are in need of financial assistance and who have for not less than two years at any time either attended any secondary middle school which serves or has served the said area, or attended before the 31st December 1982 any other secondary school which serves or has served the said area.

GENERAL PROVISIONS

11. Accounts. Statements of account in relation to the Charities shall be prepared and transmitted to the Commissioners in accordance with the provisions of the Charities Act 1960, except if and in so far as the Charities are excepted by order or regulations.

12. Charities not to relieve public funds. The Trustee shall not apply income of the Charities directly in relief of rates, taxes or other public funds but may apply income in supplementing relief or assistance provided out of public funds.

13. Questions under Scheme. Any question as to the construction of this Scheme or as to the regularity or the validity of any acts done or about to be done under this Scheme shall be determined by the Commissioners upon such application made to them for the purpose as they think sufficient.

SCHEDULE

1. Brewood Grammar School Foundation

The following adjoining land situate at Brewood being part of the site of the former Brewood Grammar School:-

- 1. Land containing 6.15 acres or thereabouts with the school buildings and part of the school playing fields thereon.
- 2. Land containing 1.447 acres or thereabouts with the buildings thereon being part of the school farm, and farm paddock.
- 3. Land which together contains 13.53 acres or thereabouts comprising the Canal Bank - Spinney, Pasture, Wet Pasture, Canal bank - Waste Ground and School Paddock.

The following land situate at Brewood with the buildings thereon now used or formerly used as houses for teaching staff:-

4. Land containing 0.24 of an acre or thereabouts with the building thereon known as No. 4 Dean Street.
5. Land containing 0.19 of an acre or thereabouts with the building thereon known as No. 18 School Road.

A perpetual yearly rentcharge of £2.50 charged upon or issuing out of land situate at Wheaton Aston, in the County of Staffordshire now in the possession or ownership of the Severn Trent Water Authority 62p yearly and Miss Yelland of The Hawthorns, Wheaton Aston £1.88 yearly.

The following investments standing in the books of the Official Custodian for Charities being permanent endowment:-

£10,304.11 13¼% Treasury Stock 2000-03.
£16,190.78 12½% Treasury Stock 2003-05.
£8,655.49 10½% Treasury Stock 1999.
£146.12 5½% Treasury Stock 2008-12.
£759.86 2½% Treasury Stock 1975 or after.
£56,152.54 7¼% Treasury Loan 2012-15.
£13,982.40 8% Treasury Loan 2002-06.
£4,873.11 2½% Consolidated Stock.
£500 2½% Consolidated Stock (Hurd Fund).
28,890.14 Income Shares in the Charities Official Investment Fund.
221 Accumulation Shares in the said Fund held pursuant to an Order of the Commissioners of the 10th May 1967.

The following investments standing in the books of the said Official Custodian representing accumulations of income:-

£1,695.13 10½% Treasury Stock 1999.
£490.62 8% Treasury Loan 2002-06.
£3,758.65 7¼% Treasury Loan 2012-15.
972.44 Income Shares in the said Fund.

£59,528.60 cash held in the Staffordshire County Council Consolidated Loan Fund representing accumulations of income.

2. The Kempson Exhibition Fund

The following investments standing in the books of the said Official Custodian:-

£276.52 10½% Treasury Stock 1999 being permanent endowment.
£2,871.05 2½% Consolidated Stock being permanent endowment.
£1,695.13 10½% Treasury Stock 1999 representing accumulations of income.

3. The Parke Exhibition Foundation

The following investments standing in the books of the said Official Custodian being permanent endowment:-

£3,328.62 5½% Treasury Stock 2008-12.
£2,935.66 10½% Treasury Stock 1999.
£446.13 2½% Consolidated Stock.

Note. The above-mentioned land and rentcharge are vested in the said Official Custodian by virtue of a Scheme made by the Commissioners under the Endowed Schools Acts and approved by Her Majesty in Council on the 30th April 1877, as affected by the provisions of the Charities Act 1960.

Sealed by Order of the Commissioners this 7th day
of July 1986.

L.S.

N1020

Appendix 7 – Draft Charity Commission application to amend the Scheme



John Tradewell
Director of Strategy, Governance and Change
Solicitor to the County Council

Protective Marking Scheme Level 3

Charity Commission for England and Wales
Po Box 211
Bootle
L20 7YX

Staffordshire Legal Services
Staffordshire County Council
2 Staffordshire Place
Tipping Street
Stafford, ST16 2DH

DX 712320 Stafford 5
Fax No. (01785) 276179
Please ask for: Vanessa Rigby
Telephone:

e-mail: vanessa.rigby@staffordshire.gov.uk

My Ref: VR/Z016078

Your Ref: BNW/518038/C-485519 **Date:** October, 2018

Dear Sirs

Brewood Educational Charity – 518038

We write further to your letter dated the 20th September 2018 to confirm that we understand from previous correspondence that only the land contained within Schedules 2 and 3 of the enclosed 1986 Scheme remain in this Scheme. The Trustees believe that this land is shown coloured blue on the enclosed Plan ('the Plan').

Under the terms of the 1986 Scheme this land can be used as a farm for providing facilities for agricultural education and rural studies for primary and secondary school pupils in the County of Staffordshire with a preference for such pupils who are resident in the area of the Parishes of Brewood, Stretton, Featherstone and Sharesill.

1. Establishing the need for a scheme

It is understood that historically the land coloured blue on the Plan was used by the Brewood Grammer School in compliance with the objects of the Charity.

In approximately 1977 Brewood Grammer School became a mixed-sex middle school now known as the Brewood CE Middle School. The School now only occupies the land shown crossed hatched and coloured blue on the enclosed Plan.

The land shown crossed hatched and coloured blue on the Plan has therefore been used for general educational purposes rather than specifically as a farm for providing facilities for agricultural education and rural studies since approximately 1977.

Brewood CE Middle School is in the process of converting into an Academy and the Charity are therefore required to grant a standard 125 year Academy Lease to St Chad's Academies Trust of the land occupied by the School as shown cross hatched and coloured blue on the Plan.

The remaining land within Schedules 2 and 3 as shown coloured blue on the Plan became surplus to the schools requirements. The remainder of the Charity Land is in part let on the enclosed Grazing Licence and part unoccupied.

Accordingly, the objectives in the 1986 Scheme can no longer be carried out in the way laid down in the governing document.

2. Deciding the new purposes/objectives

The Trustees would therefore request an amendment to the Scheme to enable the land shown cross hatched and coloured blue on the Plan to be held and used for the purposes of a school within the meaning of the Education Act 1996 as amended from time to time and any regulations made under the Education Act 1996 (including as an Academy) with the power to lease or otherwise dispose of all or any part of the land shown crossed hatched and coloured blue on the Plan to a qualifying Academy or to be held on trust for the purposes on an Academy.

This is in accordance with the spirit of original charitable objectives as it will still enable the land shown cross hatched and coloured blue on the Plan to continue to be used for educational purposes.

Further, the Secretary of State has granted the enclosed Directive Academy Order requiring the land previously used by the Brewood CE Middle School to be converted to an Academy so the amendment to the Scheme is therefore required in light of current educational requirements.

The current objectives states that the land must be used for the benefit of pupils in the County of Staffordshire with a preference for such pupils who are resident in the area of the Parishes of Brewood, Stretton, Featherstone and Shareshill. The decision as to pupil admissions does not lie with the Trustees however general catchment requirements will generally require that the school/Academy will be used for the benefit of pupils in the County of Staffordshire.

As stated above, the remainder of the land in the Scheme shown coloured blue on the Plan has been surplus to the schools requirements for a number of years and is now partly let on a Grazing Licence and is partly unoccupied. .

The Trustees would therefore request an amendment to the Scheme to enable the land coloured blue on the Plan to be sold, leased or otherwise disposed with provided the proceeds for any sale, lease or disposition are reinvested for the pupils in the County of Staffordshire with a preference for such pupils who are resident in the area of the Parishes of Brewood, Stretton, Featherstone and Shareshill.

This is therefore in accordance with the spirit of the original gift as the pupils in the County of Staffordshire will still benefit from any returns made from the land coloured blue on the Plan and it also enables the objects to reflect a realistic use for the land coloured blue on the Plan as it is no longer possible to use this in accordance with the original objectives of the Scheme.

3. Consultation

Brewood CofE (C) Middle School was classed as inadequate under their Ofsted report in 2016. In these circumstances the Secretary of State for Education must, in law, place a Directive Academy Order upon the school and seek a preferred sponsor under Section 4 of the Academies Act 2010 (as amended by the Education and Adoption Act 2016).

The normal consultation procedures for an academy conversion is therefore not undertaken when a Directive Order is made by the Secretary of State because the academy conversion is required under statute.

No formal consultation has therefore taken place by Staffordshire County Council acting as Trustees.

4. Formal application for a Scheme

Enclosed herewith are the minutes of the meeting of the Trustees of the Charity confirming the formal decision to apply for an amended to the Scheme in accordance with the contents of this correspondence. The meeting was held on [...] and the meeting was quorate.

We can confirm that the Trustees do not believe that the amendments to the Scheme will be controversial as they are merely seeking to bring the Scheme in line with the current uses of the Charity Land. So far as they are aware, there have been no objections raised to the proposals.

5. Drafting the Scheme and Public Notice

We look forward to hearing from you with confirmation that the criteria for amending the Scheme has been complied with, together with the draft Scheme for approval by the Trustees of the Charity.

If you have any queries with regard to this or if you require any further information, please do not hesitate to contact us.

Yours faithfully

Vanessa Rigby
for Director of Strategy, Governance and Change

VR / 02731224

Charities and Trusts Committee – 26 October 2018

Endowment Charity Funds Annual Accounts 2017/18

Summary

1. This report presents the 2017/18 Annual Accounts for each of the Endowment Charity Funds 'Charities' where Staffordshire County Council ("the Council") has been appointed Sole Trustee (also referred to as Custodian Trustee).

Recommendations

2. That the Committee approve the 2017/18 Annual Accounts for the 9 Charities where the Council is the Custodian Trustee (**See Appendix 2**).
3. That the Committee approve the Trustee's Annual Reports for the 3 Charities, which are required to submit such to the Charity Commission.

Background

4. The Council is the Custodian Trustee for 9 Charities and also administers the funds of several other Charities, including those where there may only be land and/or buildings. These 9 Charities were typically set up for education purposes. As Custodian Trustee, the Council is responsible for directing the affairs of the Charities, ensuring they are solvent and well-run and that they deliver the charitable objectives for the benefit of those for whom they were intended.
5. The Director of Finance and Resources is responsible for the day to day financial affairs of the Charities i.e. the collection of income and ensuring that any expenditure payable is in accordance with the Application of Income stated in the Trust Deed. He is also responsible for the production of Annual Accounts.
6. The Charity and Trusts Committee, in fulfilling its role, as Custodian Trustee for the 9 Charities, is required to approve their Annual Accounts. The Annual Accounts include a Statement of Income and Expenditure for the 2017/18 financial year and a Summary of Investments as at 31 March 2018.
7. Additionally, Charity Commission regulations state that charities with income levels of over £25,000 must submit a copy of their annual accounts, their trustee's annual report and a report from an independent examiner or auditor.

8. Currently 3 of the 9 Charities fall within this category and their reports have been included for approval by the Committee. These have been audited by the Staffordshire Audit Service, acting as the Independent Auditor, prior to submission to the Charity Commission.

Andrew Burns
Director of Finance and Resources

Contact : Melanie Stokes / Johirul Alam
Telephone No. (01785) 276330 / 276011

Appendix 1

Equalities Implications: None identified.

Legal Implications: Charity trustees have a duty to act solely in the best interests of the Charity and its beneficiaries with a view to furthering its charitable purposes and for no other purpose. They must also ensure that any charitable assets are managed independently and prudently in accordance with their charitable purpose and any restrictions in the charity's governing document.

Resource and Value for Money Implications: The Committee may provide for the relevant Charity's income and capital to be put towards meeting any reasonable expenses properly incurred when acting on behalf of the Charity.

Risk Implications: Decisions made by the Committee must be made in its capacity as Trustee only and must ensure that any decisions are made in accordance with the Charities Act 2011 and Charity Commission guidance.

Climate Change implications: None identified.

Health Impact Assessment Screening: No direct implications.

Trustee's Annual Report for the period: 1 April 2017 until 31 March 2018

Administration details

Charity name	Brewood Educational Charity
Charity registration number	518038
Charity principal address	2 Staffordshire Place, Tipping Street, Stafford, ST16 2DH

Objective

Governing document	Title Deed registered with Charity Commission on 7 July 1986 as varied by Scheme dated 30 September 1992.
Objective of the Charity	To provide such special benefits of any kind not normally provided by the Local Education Authority for any secondary school (excepting the Brewood Middle School) serving in the area of parishes of Brewood, Stretton, Featherstone, Shareshill and Codsall as may from time to time be agreed between the School Governors and the Trustees. Also to promote the education of persons under the age of 25 who are in need of financial assistance and who have not for less than 2 years at any time either attended any secondary middle school (except Brewood Middle School) which serves or has served the said area.

Structure, governance and management

Registered Trustee	Staffordshire County Council
Managing Trustees	Managing Trustees are Teachers, Governors or representatives appointed from time to time to represent each school. Criminal Records Bureau checks were carried out prior to commencement of their involvement.

Schools represented were:
Wolgarston High School
Codsall Community High School
Cheslyn Hay Sport and Community High School
Blessed William Howard Catholic High School

Financial details

To achieve the objectives of the charity, the Managing Trustees met twice a year to consider requests and allocate the discretionary awards and grants.

The financial statements were supplied and analysed by the Managing Trustees minimum twice a year.

During the 2017/18 financial year, total income received from permanent and temporary investments was £68,433 and total expenditure of £68,804 was allocated as discretionary grants towards the costs of items such as school trips, transport support and refurbishment work.

Investments

Name of Investment	Number of Units	Value at 31 March 2018 £
COIF Accumulation Shares Fund	147.33	22,018
COIF Investment Fund	138,647.35	1,971,579
Total Market Value		1,993,597

Other information

The Brewood Education Charity Endowment includes two additional funds on temporary investment with Staffordshire County Council called the Major and Minor Farm Reserve Funds.

The value of the funds as at 31 March 2018 stands as follows:

	£
Major Repair Farm Reserve Fund	2,669
Minor Repair Farm Reserve Fund	776

Independent Examination

The financial accounts of the charity for the financial year 2017/18 were checked and approved by an independent examiner from the Staffordshire Audit Service.

M.A Stokes

Signed on behalf of the Charity Trustees

Full name: Melanie A. Stokes

Position: Head of Treasury and Pensions

Date: *15 October 2018.*

Independent Examiner's Report to the Trustees of Brewood Educational Charity - 518038

I report to the trustees on my examination of the accounts of the Brewood Educational Charity Trust (the trust) for the year ended 31 March 2018.

Responsibilities and basis of report

As the charity trustees of the Trust you are responsible for the preparation of the accounts in accordance with the requirements of the Charities Act 2011('the Act').

I report in respect of my examination of the Trust's accounts carried out under section 145 of the 2011 Act and in carrying out my examination I have followed all the applicable Directions given by the Charity Commission under section 145(5)(b) of the Act.

Independent examiner's statement

I have completed my examination. I confirm that no material matters have come to my attention in connection with the examination giving me cause to believe that in any material respect:

1. accounting records were not kept in respect of the Trust as required by section 130 of the Act; or
2. the accounts do not accord with those records.

I have no concerns and have come across no matters in connection with the examination to which attention should be drawn in this report in order to enable a proper understanding of the accounts to be reached.



Susan Bachelor
Audit Assistant
Association of Accounting Technicians
Staffordshire County Council
Finance and Resources
Staffordshire Place No 2
Floor 2
Stafford
ST16 2LH

Date: 4 September 2018

BREWOD EDUCATIONAL CHARITY - TA0093

Statement of Income & Expenditure for the period 1 April 2017 - 31 March 2018

	£	£
Balance on temporary investment b/fwd 1 April 2017		32,242.79
<u>Income</u>		
Interest on permanent Investments	68,394.73	
Interest on temporary Investments	<u>38.92</u>	68,433.65
<u>Expenditure</u>		
Discretionary Grants to Schools	<u>(68,804.10)</u>	(68,804.10)
Surplus Income on temporary Investment with Staffordshire County Council at 31 March 2018		<u><u>31,872.34</u></u>
 <u>Farm Reserve Funds</u>		
Major Repair Fund on temporary Investment with Staffordshire County Council at 31 March 2018		<u><u>2,668.56</u></u>
Minor Repair Fund on temporary Investment with Staffordshire County Council at 31 March 2018		<u><u>775.74</u></u>

Summary of Investments

<u>Permanent Investment Type</u>	<u>Purchase Price</u>	<u>Nominal Value</u>	<u>Market Value as at 31 March 2018</u>	<u>Approx Annual Income</u>	<u>Due</u>
	£	£	£	£	
COIF Investment Fund Accumulation Shares	203.33	147.33 units	22,018.29	0.00	
COIF Investment Fund Income Shares	1,245,368.50	138,647.35 units	1,971,579.18	67,050.00	jun/sep/dec/mar
Total Market Value as at 31 March 2018			<u><u>1,993,597.47</u></u>	<u><u>67,050.00</u></u>	

Trustee's Annual Report for the period: 1 April 2017 until 31 March 2018

Administration details:

Charity name:	Rugeley Educational Endowment
Charity registration number	528603
Charity principal address:	2 Staffordshire Place, Tipping Street, Stafford, ST16 2DH

Objective:

Governing document:	Title Deed registered with Charity Commission on 31 March 1994 and as amended on 6 July 2017
Objective of the Charity	To provide for any eligible school equipment and other items, services and facilities for such school and thereby advance education thereat. In otherwise promoting the education either generally or individually of beneficiaries. The Trustee shall apply income in awarding prizes to pupils in recognition of their academic, artistic, moral or physical achievements, thereby furthering their education. Area of Benefit shall mean the area of Rugeley. Eligible school shall mean any secondary school in the Area of Benefit. Beneficiaries shall mean persons under 25 years of age who are or who have been pupils of an eligible school.

Structure, governance and management:

Registered Trustee	Staffordshire County Council
Managing Trustees	Managing Trustees are Teachers, Governors or representatives of the eligible schools appointed by each school. Required checks were carried out prior to commencement of employment.

Schools represented were :

The Hart School Academy

Financial details and summary of the allocation of funds

The Managing Trustees met regularly to consider requests and to allocate awards and grants to individual pupils and to each school to support various projects including the purchase of digital learning services, the award of student prizes and rewards and contributing to various student productions.

The financial statements were supplied and analysed by the Managing Trustees minimum twice a year.

During the 2017/18 financial year, total income received from permanent and temporary investments was £78,689 and total expenditure was £74,414.

The details of the expenditure from the endowment was as follows:

Area of expenditure	Amount £
Financial Assistance/ Grants/ Awards	14,054
Educational Equipment	25,974
Cultural Activities	28,723
Educational Visits	5,663
Total	74,414

Investments

Name of Investment	Number of Units	Value at 31 March 2018 £
COIF Investment Fund	159,215.19	2,264,056

Additional information

Managing Trustees also committed expenditure to the value of £40,472 towards individual schools projects, which was unspent at the year end.

Independent Examination

The financial accounts of the charity for the financial year 2017/18 were checked and approved by an independent examiner from the Staffordshire Audit Service.

M. A Stokes

Signed on behalf of the Charity Trustees

Full name: Melanie A. Stokes

Position: Strategic Investment Manager

Date: 15 October 2018.

Independent Examiner's Report to the Trustees of The Rugeley Educational Endowment - 528603

I report to the trustees on my examination of the accounts of the Rugeley Educational Endowment Trust (the trust) for the year ended 31 March 2018.

Responsibilities and basis of report

As the charity trustees of the Trust you are responsible for the preparation of the accounts in accordance with the requirements of the Charities Act 2011('the Act').

I report in respect of my examination of the Trust's accounts carried out under section 145 of the 2011 Act and in carrying out my examination I have followed all the applicable Directions given by the Charity Commission under section 145(5)(b) of the Act.

Independent examiner's statement

I have completed my examination. I confirm that no material matters have come to my attention in connection with the examination giving me cause to believe that in any material respect:

1. accounting records were not kept in respect of the Trust as required by section 130 of the Act; or
2. the accounts do not accord with those records.

I have no concerns and have come across no matters in connection with the examination to which attention should be drawn in this report in order to enable a proper understanding of the accounts to be reached.



Susan Bachelor
Audit Assistant
Association of Accounting Technicians
Staffordshire County Council
Finance and Resources
Staffordshire Place No 2
Floor 2
Stafford
ST16 2LH

Date: 4 September 2018

RUGELEY EDUCATIONAL ENDOWMENT - TA0010

Statement of Income & Expenditure for the period 1 April 2017 - 31 March 2018

	£	£
Balance on temporary investment b/fwd 1 April 2017		58,293.66
<u>Income</u>		
Interest on permanent investments	78,540.85	
Interest on temporary investments	<u>148.52</u>	78,689.37
Return to fund (transfer from commitments)	533.73	
<u>Expenditure</u>		
Discretionary Grants	-5,360.95	
Financial Assistance	-8,693.40	
Educational Equipment	-25,973.75	
Sporting/Cultural Activities	-28,722.97	
Education Visits	<u>(5,662.50)</u>	(74,413.57)
Surplus income on temporary investment with Staffordshire County Council at 31 March 2018		<u>62,569.46</u>
<u>Committed Expenditure</u>		
(Please see attached breakdown for full details)		(40,471.55)
Total available for expenditure at 31 March 2018		<u>22,097.91</u>

Summary of Investments

<u>Permanent Investment Type</u>	<u>Purchase Price</u>	<u>Nominal Value</u>	<u>Market Value as at 31 March 2018</u>	<u>Approx. Annual Income</u>	<u>Due</u>
	£		£	£	
COIF Investment Fund Shares	1,504,736.04	159,215.19 units	2,264,055.92	78,541.00	jun/sep/dec/mar
Total Market Value as at 31 March 2018			<u>2,264,055.92</u>	<u>78,541.00</u>	

Trustee's Annual Report for the period: 1 April 2016 until 31 March 2017

Administration details

Charity name	Stafford Education Centre Charity
Charity registration number	528604
Charity principal address	2 Staffordshire Place, Tipping Street, Stafford, ST16 2DH

Objectives:

Governing document	Title Deed registered with Charity Commission on 26 July 1963 Governing document – scheme dated 11 March 2016
Objective of the Charity	1. The promotion of education of persons between the ages of 14 and 19 years (and subject to the provisions of sub-clause 2 of this clause for children under the age of 14) who are resident in, or being educated in, Stafford in such ways as the Trustee sees fit. 2. The Trustee may permit the property of the charity to be used for the education of children under the age of 14 by the granting of a licence to an educational institution in need of such use (for conditions see scheme).

Structure, governance and management

Registered Trustee	Staffordshire County Council
Managing Trustees	Managing Trustees are representatives of Staffordshire County Council Charities and Trust Committee. The required checks were carried out prior to commencement of employment.

Financial details

To achieve the objectives in 2017/18 the Registered Trustee gave approval to allocate income to the education of Stafford residents as part of the Stafford 14-19 Partnership.

During the 2017/18 financial year, total income received from permanent and temporary investments was £106,731 and total expenditure was £107,576.

The details of expenditure from the endowment was as follows:

Narrative	£
Approved contribution to Stafford 14-19 Partnership	84,772
Premises costs	7,082
Disposal of Chetwyn Centre costs	15,722
Total	107,576

Investments

Name of Investment	Number of Units	Value at 31 March 2018 £
COIF Investment Fund	291,165.50	4,140,403

Additional information:

During the 2017/18 financial year, the Registered Trustee agreed to the sale of the Chetwynd Centre property and reinvestment of the proceeds from the sale to buy further shares in the COIF Investment Fund.

Independent Examination

The financial accounts of the charity for the financial year 2017/18 were checked and approved by an independent examiner from the Staffordshire Audit Service.

Signed on behalf of the Charity Trustees



Full name: Melanie A. Stokes

Position: Strategic Investment Manager

Date: 15 October 2018.

**Independent Examiner's Report to the Trustees of
Stafford Education Centre Charity - 528604**

I report to the trustees on my examination of the accounts of the Stafford Education Centre Charity Trust (the trust) for the year ended 31 March 2018.

Responsibilities and basis of report

As the charity trustees of the Trust you are responsible for the preparation of the accounts in accordance with the requirements of the Charities Act 2011('the Act').

I report in respect of my examination of the Trust's accounts carried out under section 145 of the 2011 Act and in carrying out my examination I have followed all the applicable Directions given by the Charity Commission under section 145(5)(b) of the Act.

Independent examiner's statement

I have completed my examination. I confirm that no material matters have come to my attention in connection with the examination giving me cause to believe that in any material respect:

1. accounting records were not kept in respect of the Trust as required by section 130 of the Act; or
2. the accounts do not accord with those records.

I have no concerns and have come across no matters in connection with the examination to which attention should be drawn in this report in order to enable a proper understanding of the accounts to be reached.



Susan Bachelor
Audit Assistant
Association of Accounting Technicians
Staffordshire County Council
Finance and Resources
Staffordshire Place No 2
Floor 2
Stafford
ST16 2LH

Date: 4 September 2018

STAFFORD EDUCATION CENTRE CHARITY - TA0141

Statement of Income & Expenditure for the period 1 April 2017 - 31 March 2018

	£	£
Balance on temporary investment b/fwd 1 April 2017		27,303.91
 <u>Income</u>		
Interest on permanent investments	106,554.60	
Interest on temporary investments	176.06	
Income from SBC	<u>0.00</u>	106,730.66
 <u>Expenditure</u>		
Contribution to Stafford 14-19 Partnership 2017/18*	(84,772.00)	
Premises costs from 01.09.17	(7,081.68)	
Disposal of Chetwyn Centre	<u>(15,722.00)</u>	(107,575.68)
Surplus income on temporary investment with Staffordshire County Council at 31 March 2018		<u><u>26,458.89</u></u>
Commitments related to disposal of Chetwyn Centre		(6,182.93)
Total available for expenditure at 31 March 2018		<u><u>20,275.96</u></u>

Summary of Investments

<u>Permanent Investment Type</u>	<u>Purchase Price</u>	<u>Nominal Value</u>	<u>Market Value as at 31 March 2018</u>	<u>Approx. Annual Income</u>	<u>Due</u>
	£		£	£	
**COIF Investment Fund Shares	3,325,969.15	291,165.50 units	4,140,402.53	104,459.00	jun/sep/dec/mar
Total Market Value as at 31 March 2018			<u>4,140,402.53</u>	<u>104,459.00</u>	

* A sum of £84,772 for 2017/18 has been approved in the refreshed Business Plan for the Stafford 14-19 Partnership (formerly known as Stafford Collegiate)

** Proceeds of £1,126,000 from sale of Chetwynd Centre reinvested into COIF Investment Fund shares on 18/01/2018 - 75,161.87 units @ 1,498.10p per un

QUEEN ELIZABETH MERCIAN AND RAWLETT SCHOOLS ENDOWMENT CHARITY- TAMWORTH - TA0101

Statement of Income & Expenditure for the period 1 April 2017 - 31 March 2018

	£	£
Balance on temporary investment b/fwd 1 April 2017		4,921.99
<u>Income</u>		
Beardsley Charity	8,425.64	
Interest on temporary investments	9.58	
Misc	14.91	8,450.13
<u>Expenditure</u>		
Recoupment order - Rawlett -No 9	(1,000.00)	
Discretionary Grants	<u>(8,000.00)</u>	(9,000.00)
Surplus income on temporary investment with Staffordshire County Council at 31 March 2018		<u><u>4,372.12</u></u>

Summary of Investments

<u>Permanent Investment Type</u>	<u>Purchase Price</u>	<u>Nominal Value</u>	<u>Market Value as at 31 March 2018</u>	<u>Approx. Annual Income</u>	<u>Due</u>
	£	£	£	£	
COIF Investment Fund Shares	73,962.10	17,146.92 units	243,830.92	6,673.20	jun/sep/dec/mar
Total Market Value as at 31 March 2018			<u>243,830.92</u>	<u>6,673.20</u>	

STAFFORD EDUCATIONAL ENDOWMENT - TA0081

Statement of Income & Expenditure for the period 1 April 2017 - 31 March 2018

	£	£
Balance on temporary investment b/fwd 1 April 2017		16,905.38
 <u>Income</u>		
Interest on permanent investments	16,859.61	
Interest on temporary investments	26.61	
Other Rents - McDonald Rest Ltd	5.73	
Queen Elizabeth's Grant	<hr/>	16,891.95
 <u>Expenditure</u>		
Discretionary Grants to Schools	(15,000.00)	(16,700.00)
Financial Assistance	(1,700.00)	
 Surplus on temporary investment with Staffordshire County Council at 31 March 2018		<hr/> 17,097.33 <hr/>

Summary of Investments

<u>Permanent Investment Type</u>	<u>Purchase</u>	<u>Nominal</u>	<u>Market Value</u>	<u>Approx.</u>	<u>Due</u>
	<u>Price</u>	<u>Value</u>	<u>as at 31 March 2018</u>	<u>Annual</u>	
	£	£	£	Income	
COIF Investment Fund Shares	174,422.25	34,177.18 units	486,002.92	16,860.00	jun/sep/dec/mar
Queen Elizabeth's Grant				104.25	sept
Estate of late WM Dale*			2,000.00		
Total Market Value as at 31 December 2018			<hr/> 488,002.92 <hr/>	<hr/> 16,964.25 <hr/>	

* A cheque for £2,000 was received from the executors of the estate which will be invested in the COIF Investment fund in 2018/19.

STONE ALLEYNES HIGH SCHOOL - TA0021

Statement of Income & Expenditure for the period 1 April 2017 - 31 March 2018

	£	£
Balance on temporary investment b/fwd 1 April 2017		25,344.87
 <u>Income</u>		
Trinity College Grant	400.00	
Interest on permanent investments	1,669.35	
Interest on temporary investments	<u>53.59</u>	2,122.94
 <u>Expenditure</u>		
Prizes and Rewards	<u>(1,500.00)</u>	(1,500.00)
 Surplus income on temporary investment with Staffordshire County Council at 31 March 2018		
		<u><u>25,967.81</u></u>

Summary of Investments

<u>Permanent Investment Type</u>	<u>Purchase Price</u> £	<u>Nominal Value</u> £	<u>Market Value</u> as at 31 March 2018 £	<u>Approx Annual Income</u> £	<u>Due</u>
COIF Investment Fund Income Shares	33,615.78	3,384.03 units	48,121.25	1,000.00	jun/sep/dec/mar
Trinity College				400.00	march
Total Market Value as at 31 March 2018			<u>48,121.25</u>	<u>1,400.00</u>	

THOMAS RUSSELL FOUNDATION - TA0061

Statement of Income & Expenditure for the period 1 April 2017 - 31 March 2018

	£	£
Balance on temporary investment b/fwd 1 April 2017		1,822.82
 <u>Income</u>		
Interest on permanent investments	315.44	
Interest on temporary investments	<u>4.29</u>	319.73
 <u>Expenditure</u>		
Grants to students	0.00)	
Purchases	<u>0.00)</u>	0.00-)
 Surplus income on temporary investment with Staffordshire County Council at 31 March 2018		 <u><u>2,142.55</u></u>

Summary of Investments

<u>Permanent Investment Type</u>	<u>Purchase Price</u>	<u>Nominal Value</u>	<u>Market Value as at 31 March 2018</u>	<u>Approx Annual Income</u>	<u>Due</u>
	£	£	£	£	
COIF Investment Fund Income Shares	6,485.54	639.43	units 9,092.76	292.00	jun/sep/dec/mar
Total Market Value as at 31 March 2018			<u>9,092.76</u>	<u>292.00</u>	

UTTOXETER ALLEYNES FOUNDATION ENDOWMENT - TA0071

Statement of Income & Expenditure for the period 1 April 2017 - 31 March 2018

	£	£
Balance on temporary investment b/fwd 1 April 2017		7,838.40
 <u>Income</u>		
Trinity College Grant	400.00	
Interest on permanent investments	1,027.73	
Interest on temporary investments	<u>17.99</u>	1,445.72
 <u>Expenditure</u>		
Prizes and Rewards	<u>(0.00)</u>	(0.00)
 Surplus income on temporary investment with Staffordshire County Council at 31 March 2018		 <u><u>9,284.12</u></u>

Summary of Investments

<u>Permanent Investment Type</u>	<u>Purchase Price</u>	<u>Nominal Value</u>	<u>Market Value as at 31 March 2018</u>	<u>Approx Annual Income</u>	<u>Due</u>
	£	£	£	£	
COIF Investment Fund Shares	20,767.54	2,083.40 units	29,626.16	901.00	jun/sept/dec/mar
Trinity College				400.00	march
Total Market Value as at 31 March 2018			<u>29,626.16</u>	<u>1,301.00</u>	

Main Name	Charity No	SCC Deed Packet	Titles Numbers	Notes	Object Description	Trustee	Asset	Registration History
BREWOOD EDUCATIONAL CHARITY	518038	adjoining SCC land in deed packet C87	Land in process of being registered	Brewood Grammar School & Brewood Middle School - Currently occupied by SCC as Local Education Authority. Academy order has been granted property will be leased to Academy on 125 year lease.	A) TO PROVIDE SUCH SPECIAL BENEFITS OF ANY KIND NOT NORMALLY PROVIDED BY THE LOCAL EDUCATION AUTHORITY FOR ANY SECONDARY SCHOOL (EXCEPTING THE BREWOOD MIDDLE SCHOOL) SERVING IN THE AREA OF THE PARISHES OF BREWOOD, STRETTON, FEATHERSTONE, SHARESILL AND CODSALL AS MAY FROM TIME TO TIME BE AGREED BETWEEN THE SCHOOL GOVERNORS AND THE TRUSTEES. B) TO PROMOTE THE EDUCATION OF PERSONS UNDER THE AGE OF 25 YEARS WHO ARE IN NEED OF FINANCIAL ASSISTANCE AND WHO HAVE NOT LESS THAN TWO YEARS AT ANY TIME EITHER ATTENDED ANY SECONDARY MIDDLE SCHOOL (EXCEPTING THE BREWOOD MIDDLE SCHOOL) WHICH SERVES OR HAS SERVED THE SAID AREA.(FOR FURTHER DETAILS SEE CL 8 OF THE SCHEME)	Staffordshire County Council	Land known as Brewood Grammar School & Brewood Middle School together with playing field and investment cash	09 October 1986
KING EDWARD VI HIGH SCHOOL, LICHFIELD	528600	C232 / C1426	SF623107	King Edward VI High School, Lichfield - Currently occupied by SCC as Local Education Authority.	(A) IN AWARDING TO BOYS AND GIRLS OR YOUNG MEN AND WOMEN NOT OVER 25 YEARS OF AGE WHO ARE OR WHO HAVE BEEN FOR NOT LESS THAN TWO YEARS AT ANY TIME IN ATTENDANCE AT THE SCHOOL AND WHO ARE, IN THE OPINION OF THE COUNCIL, IN NEED OF FINANCIAL ASSISTANCE, SCHOLARSHIPS, BURSARIES OR MAINTENANCE ALLOWANCES TENABLE AT ANY SCHOOL, UNIVERSITY, OR OTHER PLACE OF LEARNING, APPROVED BY THE COUNCIL. (B) IN PROVIDING FINANCIAL ASSISTANCE, OUTFITS, CLOTHING, TOOLS, INSTRUMENTS OR BOOKS TO ENABLE BENEFICIARIES ON LEAVING SCHOOL, A UNIVERSITY, OR ANY OTHER EDUCATIONAL ESTABLISHMENT, TO PREPARE FOR, OR TO ASSIST THEIR ENTRY INTO, A PROFESSION TRADE OR CALLING. FOR FURTHER DETAILS SEE SCHEME.	Staffordshire County Council	Land only conveyance 6 July 1920. Investment fund transferred to school governing body in 1999 Fund for Students' charity number 516595	01 June 1967
STAFFORD EDUCATIONAL ENDOWMENT CHARITY	517345	D41	Not applicable	Grants to the high schools and individuals after consultation by the 6 High schools in Stafford - Blessed William Howard, King Edward VI, Rising Brook High School, Sir Graham Balfour High School, Walton High School and Weston Road High School.	A. TO PROVIDE, AFTER CONSULTATION WITH THE GOVERNORS OF THE SCHOOLS CONCERNED, SPECIAL BENEFITS OF ANY KIND NOT NORMALLY PROVIDED BY THE LOCAL EDUCATION AUTHORITY FOR ANY SECONDARY SCHOOL IN STAFFORD. B. FOR THE BENEFIT OF PERSONS UNDER 25 YEARS OF AGE WHO ARE ATTENDING OR HAVE ATTENDED ANY SECONDARY SCHOOL IN STAFFORD AND WHO ARE IN NEED OF FINANCIAL ASSISTANCE.	Staffordshire County Council	No Land. Investment cash only	13 March 1986
STAFFORDSHIRE EDUCATION CENTRE CHARITY (CHETWYND CENTRE)	528604	C70 and D5	SF623233	Provides buildings/hardstanding know as the Chetwynd Centre income generated by the permanent endowment may be applied to the upkeep and maintenance of the Chetwynd Centre building. Chetwynd Centre has now been sold on 5 January 2018. No land is held by this charity now.	Object of the charity amended 11 March 2016 (1) The object of the charity is the promotion of education of persons between the ages of 14 and 19 years (and subject to the provisions of sub-clause (2) of this clause for children under the age of 14) who are resident in, or being educated in, Stafford in such ways as the trustee sees fit. (2) The trustee may permit the property of the charity to be used for the education of children under the age of 14 by the granting of a licence to an educational institution in need of such use provided that: (i) the licence does not exceed a period of six months; and (ii) the occupier pays all insurance and other relevant costs during the period of occupation.	Staffordshire County Council	No land Investment cash only.	26 July 1963
THE QUEEN ELIZABETH'S MERCIAN SCHOOL	528605	C65	SF547501 (Leasehold) / SF561042 Restriction on Title in place (Freehold) / SF556000 (Leasehold)	Queen Elizabeth's Mercian School is an Academy School and the land owned by Staffordshire County Council as Trustees was let to the Academy on a five year lease which has expired. The Academy is still in occupation of the property owned by Staffordshire County Council as Trustees but only use part of the premises - but no formal lease or tenancy at will is in place. The Academy are holding over under the previous lease.	THE SCHOOL PREMISES OF THE FOUNDATION INCLUDING THE PLAYING FIELD SHALL BE HELD BY THE COUNCIL AS ADMINISTRATIVE TRUSTEE FOR THE PURPOSES OF A SCHOOL WITHIN THE MEANING OF THE EDUCATIONS ACTS (INCLUDING AN ACADEMY) MAINTAINED BY THE COUNCIL AS ADMINISTRATIVE TRUSTEE.	Staffordshire County Council	School premises & playing field and investment cash	20 June 1967
THOMAS ALLEYNE'S HIGH SCHOOL FUND	528606	C80 / C78 / H2038/10 these deed packets relate to the adjoining school site owned by SCC	SF512205	Provision of prizes and awards, contributions and financial assistance. Land known as Alleynes Grammar School. School converted to an Academy on 1 April 2017, land owned by Staffordshire County Council in corporate capacity and as trustees to be leased to the Academy on a 125 year lease.	THE OBJECT OF THE TRUST SHALL BE TO ADVANCE THE EDUCATION OF THE PUPILS OF THOMAS ALLEYNE'S HIGH SCHOOL BY PROVIDING OR ASSISTING IN THE PROVISION OF EDUCATIONAL, RECREATIONAL AND OTHER CHARITABLE FACILITIES IN AUGMENTATION OF SUCH FACILITIES FINANCED BY THE LOCAL EDUCATION AUTHORITY OR THE DEPARTMENT OF EDUCATION. IN FURTHERANCE OF THIS OBJECT BUT NOT FURTHER OR OTHERWISE THE TRUSTEES MAY UNDERTAKE ACTIVITIES WHICH PROMOTE THE CHARITABLE WORK OF THE SCHOOL AND FURTHER THE EDUCATION AND ADVANCEMENT IN LIFE OF THE PUPILS.	Staffordshire County Council	Land and investment cash	13 June 2011
THOMAS RUSSELL ALLOTMENT	528431	Investment Cash only	Not applicable	Grants to individuals	ASSISTING PUPILS TO OBTAIN EDUCATION OTHER THAN ELEMENTARY. ARRANGING FACILITIES FOR ATTENDING TO THE HEALTH OF SCHOOL CHILDREN. PROVISION OF SPECIAL BENEFITS AT ANY PUBLIC ELEMENTARY SCHOOL IN THE PARISH, OTHERWISE PROMOTING THE EDUCATION OF POORER CHILDREN. MAINTENANCE OF AN EXHIBITION TENABLE AT EITHER OF THE UNIVERSITIES OF OXFORD AND CAMBRIDGE.	Staffordshire County Council	No Land. Investment cash only	#####
THOMAS RUSSELL'S FOUNDATION	528430	Investment Cash only	Not applicable	Grants to individuals	ASSISTING PUPILS TO OBTAIN EDUCATION OTHER THAN ELEMENTARY. ARRANGING FACILITIES FOR ATTENDING TO THE HEALTH OF SCHOOL CHILDREN. PROVISION OF SPECIAL BENEFITS AT ANY PUBLIC ELEMENTARY SCHOOL IN THE PARISH, OTHERWISE PROMOTING THE EDUCATION OF POORER CHILDREN. MAINTENANCE OF AN EXHIBITION TENABLE AT EITHER OF THE UNIVERSITIES OF OXFORD AND CAMBRIDGE.	Staffordshire County Council	No land. investments cash only	06 August 1963

THE RUGELEY EDUCATIONAL ENDOWMENT	528603	C141 - Chancel Primary School	Curently in process of registering Chancel Primary School	<p>The Rugeley Endowment consists of 4 charities</p> <ol style="list-style-type: none"> 1. The Rugeley Grammar School - now called Chancel Primary School Rugeley land unregistered. 2. The Alex Payne Conversation French Prize 3. Mrs Lucy Cotterells Prize 4. The Reveren J Thomas Walters Prize Fund <p>The Charities numbered 2 to 4 are to be administered and managed together as one Charity under the heading of the Rugeley Schools Prize Fund. (the Prize Charity) The Charity numbered 1 shall be administered and managed under the title Rugeley Educational Foundation. (the Foundation)</p> <p>Application of Income Definitions: An eligible school: means any voluntary, grant maintained or county secondary school in the area of benefit. The area of benefit: means the former urban district of Rugeley as constituted on 31 March 1974. Beneficiaries: means persons under 25 years of age who are or who have been pupils of an</p>	AFTER PAYMENT OF EXPENSE OF ADMISTRATION NET YEARLY INCOME SHALL BE APPLIED BY THE COUNCIL IN THE MANNER ANBD TO THE OBJECTS AS FOLLOWING:1.THE INCOME OF REVEREND J THOMAS WALTERS' PRIZE FUND SHALL BE APPLIED IN THE AWARD OF PRIZES TO PUPILS ATTENDING THE FAIR OAK COMPREHENSIVE SCHOOL, RUGELEY;2.THE INCOME OF THE ALEX PAYNE CONVERSATION FRENCH PRIZE AND MRS LUCY COTTRELL'S PRIZE SHALL BE SUPPLIED FOR THE BENEFIT OF PUPILS ATTENDING THE FAIR OAK COMPREHENSIVE SCHOOL.3.THE REMAINDER OF THE ENDOWMENT SHALL BE APPLIED BY THE COUNCIL IN ANY ON OR MORE OF THE FOLLOWING WAYS:A)AMENDING TO BENEFICIARIES SCHOLARSHIPS, GRANTS OR MAINTENANCE ALLOWANCES TENABLE AT ANY SCHOOL, UNIVERSITY OR OTHER PLACE OF LEARNING APPROVED BY THE COUNCIL;B)PROVIDING FINANCIAL ASSISTANCE, OUTFITS, CLOTHING, TOOLS, INSTRUMENTS OR BOOKS TO HELP BENEFICIARIES ON LEAVING SCHOOL, UNIVERSITY OR ANY OTHER EDUCATIONAL ESTABLISHMENT TO PREPARE FOR OR TO ENTER A PROFESSION TRADE OR CALLING;C)AWARDING BURSARIES OR MAINTENANCE ALLOWANCES TO ENABLE BENEFICIARIES TO TRAVEL WHETHER IN THIS COUNTRY OR ABROAD TO PURSUS THEIR EDUCATION;D)PROVIDING FINANCIAL ASSISTANCE TO ENABLE BENEFICIARIES TO STUDY MUSIC OR OTHER ARTS;E)OTHERWISE PROMOTING THE EDUCATION(INCLUDING SOCIAL AND PHYSICAL TRAINING) OF BENEFICIARIES WHO SHALL BE PERSONS OF EITHER SEX WHO HAVE NOT ATTAINED THE AGE OF 25 YEARS AND WHO ARE ATTENDING, OR HAVE FOR NOT LESS THAN TWO YEARS ATTENDED, ANY COMPREHENSIVE SCHOOL SITUATED WITHIN THE URBAD DISTRICT OF RUGELEY, AND WHO IN THE OPINION OF THE COUNCIL ARE IN NEED OF FINANCIAL ASSISTANCE	Staffordshire County Council	Land and investment cash	#####
DOSTHILL PLAING FIELD AND RECREATION GROUND	700496	C402	SF586310	Amenity land. Land can be used by pupils of Doshill Primary.	A PLAYING FIELD AND RECREATION GROUND FOR THE USE AND BENEFIT OF CHILDREN (INCLUDING THE CHILDREN ATTENDING DOSTHILL COUNCIL SCHOOL) OF THE BENEFICIARIES INHABITANTS OF DOSTHILL AND THE SURROUNDING DISTRICTS OR ANY OTHER KINDERED PURPOSES.	Staffordshire County Council	Land only no cash or investments	27 July 1988
TAMWORTH YOUTH CENTRE FUND	522734	C182	SF582362 and part under SF553116	Youth Centre currently leased to Staffordshire County Council on a 99 year lease as £ per annum from the 26 June 1977. The Staffordshire County Council underlet to ADS under a 5 year full repairing lease at a rent of £1 per annum.	TO PROVIDE OR ASSIST IN THE PROVISION OF FACILITIES FOR RECREATION OR OTHER LEISURE TIME OCCUPATION OF PERSONS UNDER 25 YEARS OF AGE WHO ARE RESIDENT IN THE AREA OF BENEFIT WITH THE OBJECT OF IMPROVING THE CONDITIONS OF LIFE FOR THE SAID PERSONS.	Staffordshire County Council	Land and Investment cash	03 January 1964
ALLEYNES GRAMMAR SCHOOL STONE	528650	C79	SF548100	Land leased to Alleynes Academy on a 125 year academy lease.	THE PREMISES SHALL BE HELD AND USED FOR THE PURPOSES OF A COUNTY SECONDARY SCHOOL FOR BOYS AND GIRLS. THE NET ANNUAL INCOME WHICH REMAINS AFTER PAYMENT OF ANY EXPENSES OF ADMINISTRATION SHALL BE APPLIED IN PROVIDING FOR THE SCHOOL SPECIAL BENEFITS OF A KIND NOT NORMALLY PROVIDED BY THE LOCAL EDUCATION AUTHORITY	Staffordshire County Council	Land/buildings on school site, prize funds, rent charge and investment cash	12 January 1967
NICHOLSON INSTITUTE	1031380	C1691/D 19	SF527527	The Staffordshire County Council has held the Nicholson Institute in trust since 1974, when the library function transferred to the Staffordshire County Council. Staffordshire Moorlands District Council and Leek College also have user right in the building. The property was gifted to The Leek Commissioners and their successors and heirs by Arthur Nicholson subject to a restrictive covenant that the building was to be used solely for the purpose of providing a public library and for uses encouraging the promotion of Literature, Science and the Fine Arts. The occupational rights of Staffordshire Moorlands District Council and Leek College have not been formalised	PROVISION OF A PUBLIC LIBRARY AND ART GALLERY	Staffordshire County Council	Land / buildings	12 January 1994
Short Street Infants School (BURTON ON TRENT EDUCATIONAL CHARITY	4053674	C1994	SF533440	Part of the land included in the title, (in the south-west corner), is subject to a restriction for the trust. The trust is for the education of young people in the area. The trust is a scheme adopted in May 2014 called the Burton on Trent Educational Charity. Part of the school site owned by the charity has now been sold on 27 September 2018. Proceeds of sale to be invested in accordance with object of the charity	The Burton on Trent Education Scheme is to further the education of young people who live in the area of benefit	Staffordshire County Co	No land investment cash only	

Not for publication by virtue of paragraph(s) 3
of Part 1 of Schedule 12A
of the Local Government Act 1972

Document is Restricted

